

Agenda for Mechanics and Floor Positioning

1.0 Pre-Game Positioning and Responsibilities

1.1 Pre-Game Duties

- Check Uniforms (including undershirts)
- Check for Jewelry, Cast, Handwear, Berets, Bead, etc.
- Visually count the # of players for each team - verify with Table/Scorer
- Select legal game ball
- Ensure teams are warming up at the right basketb (opposite bench 1st half)

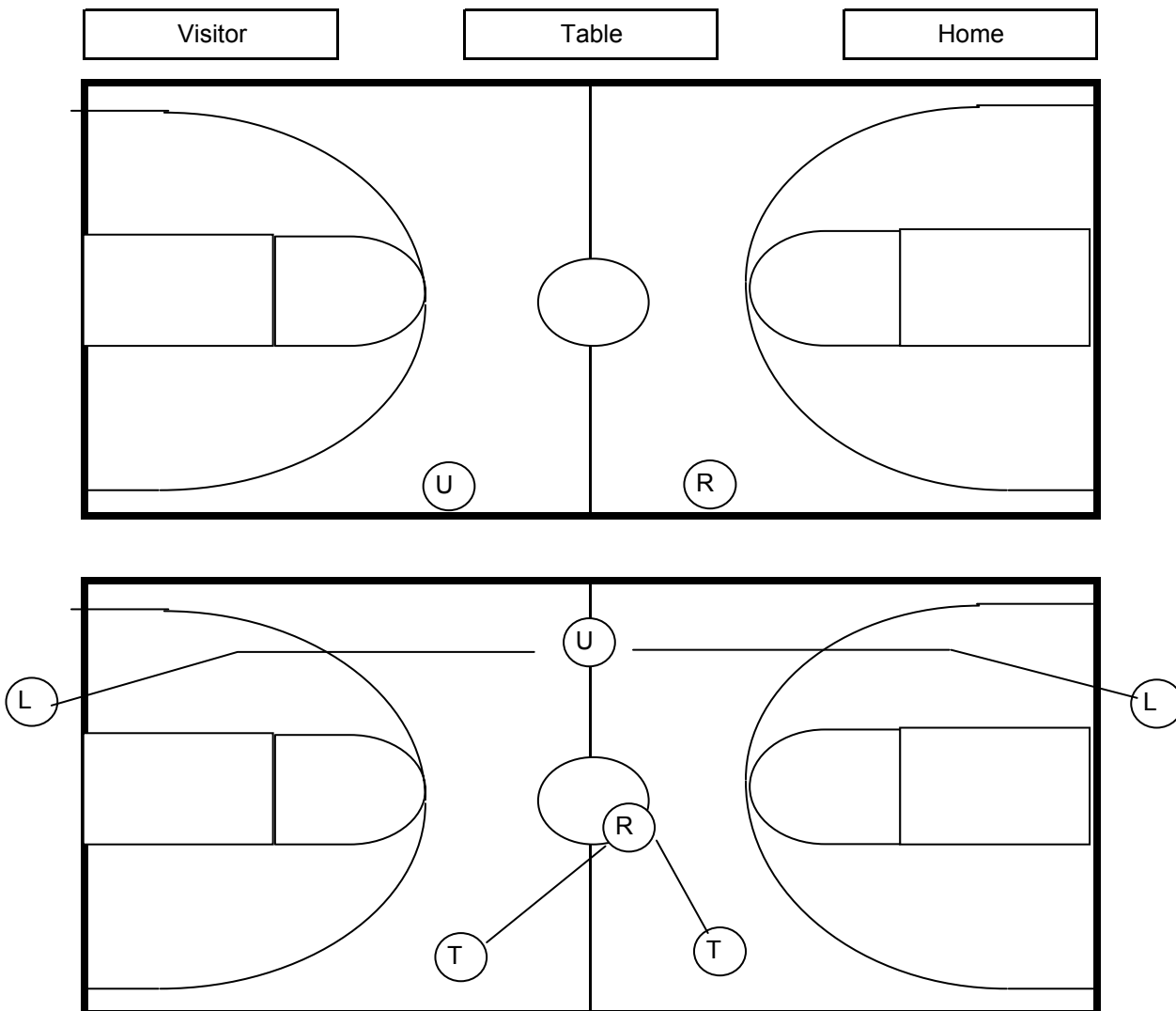
1.2 Captains Meeting (optional)

- Introductions
- Review court boundary lines
- Review any special issues with the court (out of bounds)
- Stress Good sportsmanship - blue talks to blue , white talks to white, ect.
- Team Captains may ask the official question
- Good Luck

1.3 Pre-Game Conference w/ Coaches (2 minutes before game starts)

- Get both coaches together at the same time (preferable)
- Introductions
- Ask if all players are properly equipped and willing to participate in a sporting manner
- Review coaches box and any special situations

NFHS 2 Person Mechanics



2.0 Jump Ball - Officials opposite the Table should verify that the alternating possession arrow is set towards the basket of the team who did not secure the possession of the jump ball.

3.0 Basic Court Coverage

3.1 Lead Coverage (L1)

Ahead of play

Primarily responsible for play under the basket

Play is spread. Wider position by arc.

Ball and majority of players on Trail side - Move towards the basket and play.

Responsible for baseline and nearer sideline for out of bounds calls

3.2 Trail Coverage

Cover back court and outer part of front court

Work wide arc as play dictates

Responsible for flight of the ball

Take 1 step in when shoot is taken to cover:

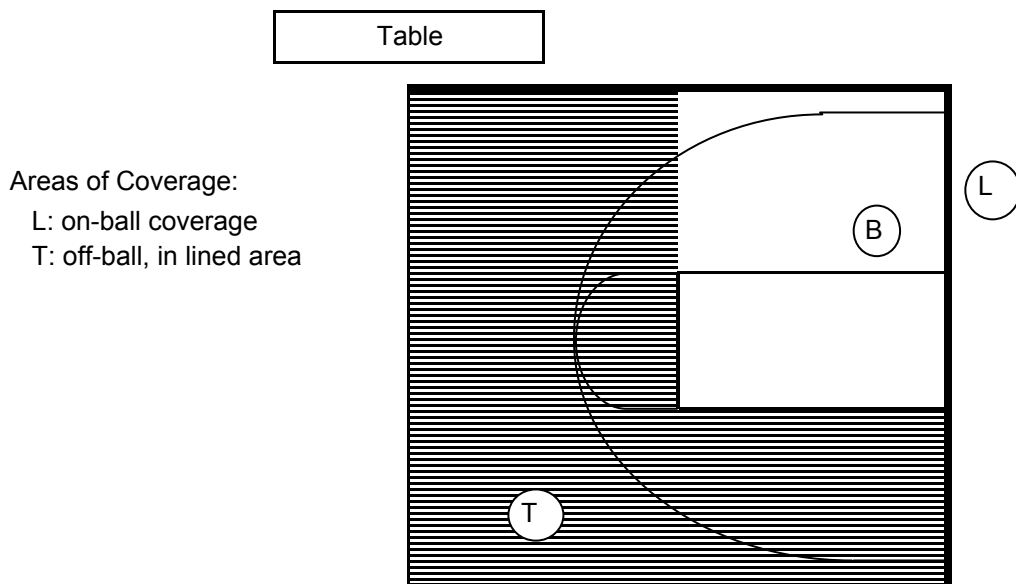
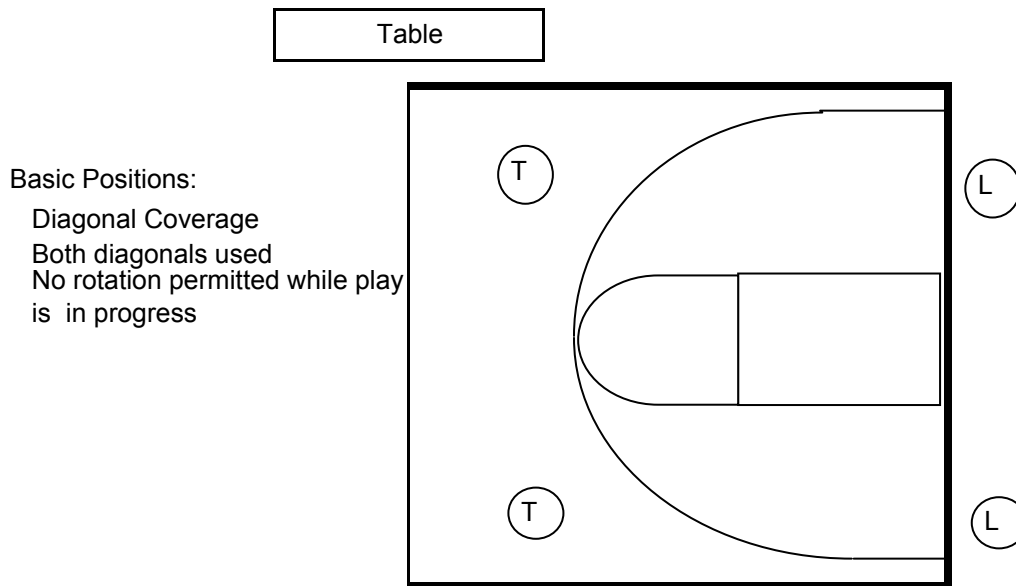
Goaltending

Basket Interference

Rebounding

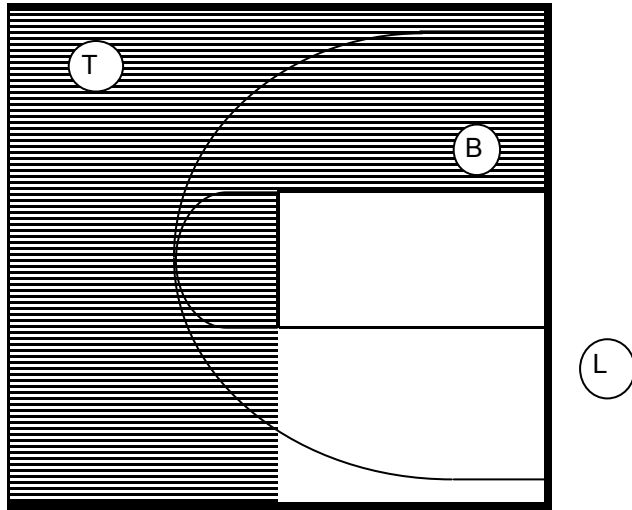
Responsible for nearer sideline and opposite baseline for out of bounds calls

3.3 Basic Positions & On Court Coverage Training



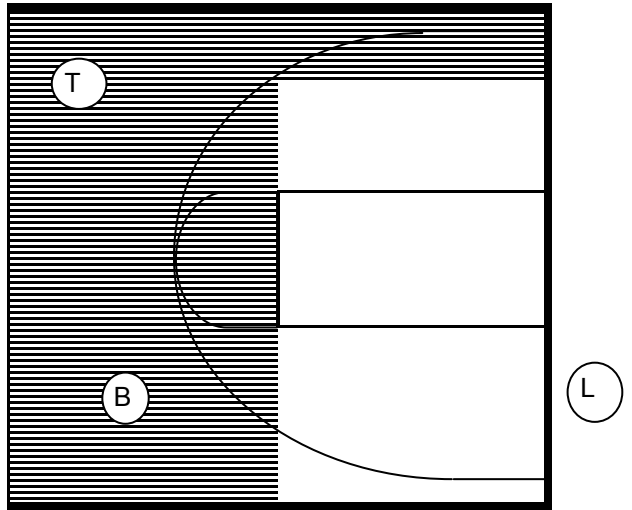
Table

Areas of Coverage:
T: on-ball coverage
L: off-ball, un-lined area



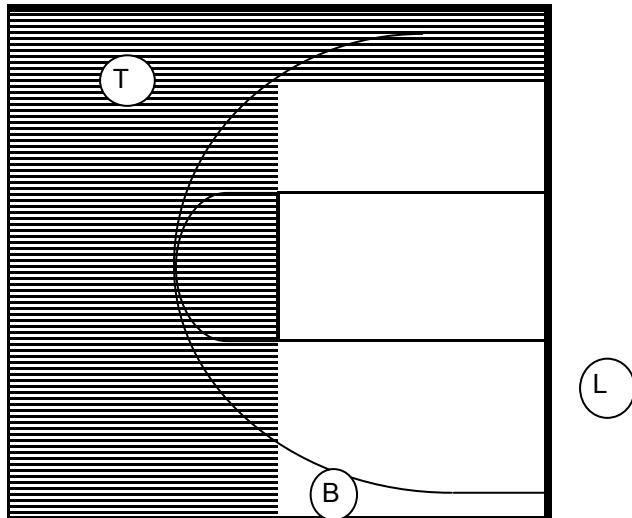
Table

Areas of Coverage:
T: off-ball in lined area
L: off ball in unlined area extending to opposite side of key since ball is high



Table

Areas of Coverage:
T; off-ball in lined area
L: Move to cover 3 point arc
Signal 3-point try
T mirrors signal
T signals successful try

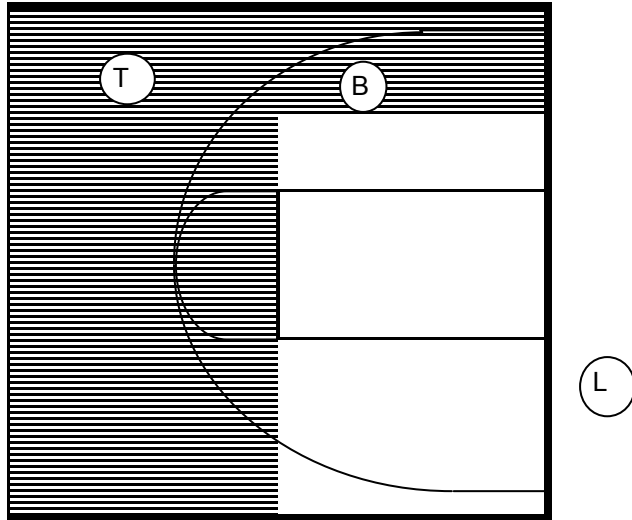


Table

Areas of Coverage:

T: On the ball coverage

L: works near key for good coverage off-ball



4.0 Throw-In Coverage and Responsibilities

4.1 Throw-In Principles

Spot designated by administering official unless determined by rule

Box-in on all throw-ins

T administers All throw-ins in backcourt

In front court, throw-in administered by official responsible for line

Hand or bounce ball

Sideline: bouncing recommended

End line and remaining in frontcourt: handling the ball is recommended

Sound warning whistle after time-out, intermission or unusual delay

4.2 Practice Throw-Ins

Hand or bounce ball to player

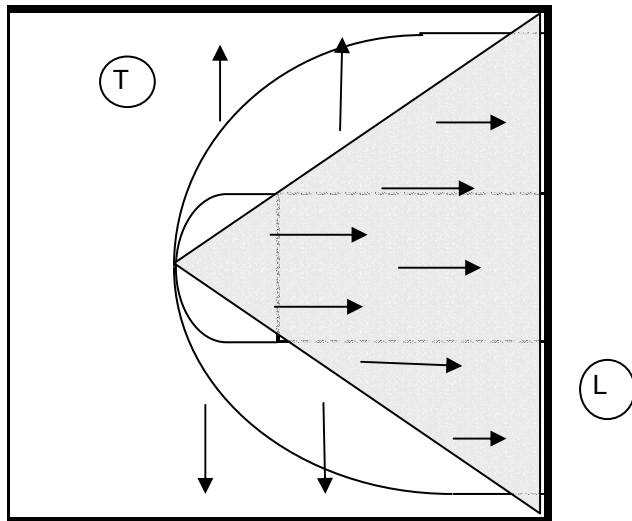
Raise inside arm with fingers extended

Please whistle in mouth

Start visual count with outside arm

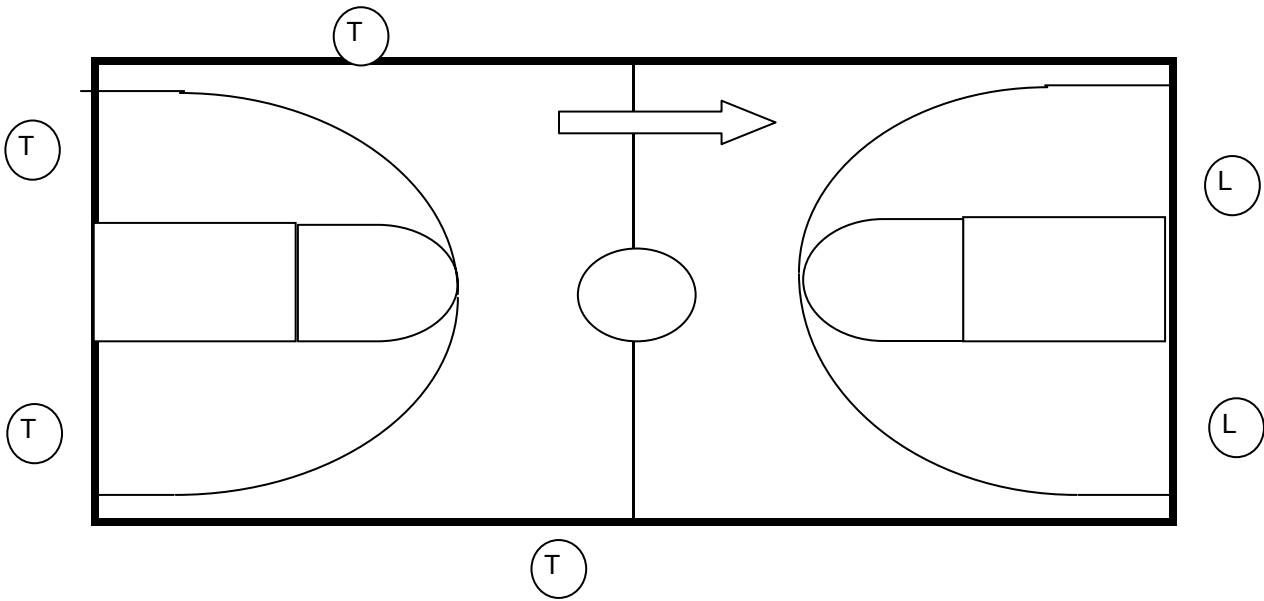
Back away from players and monitor play

Throw-In Spot



Throw-In in back court:

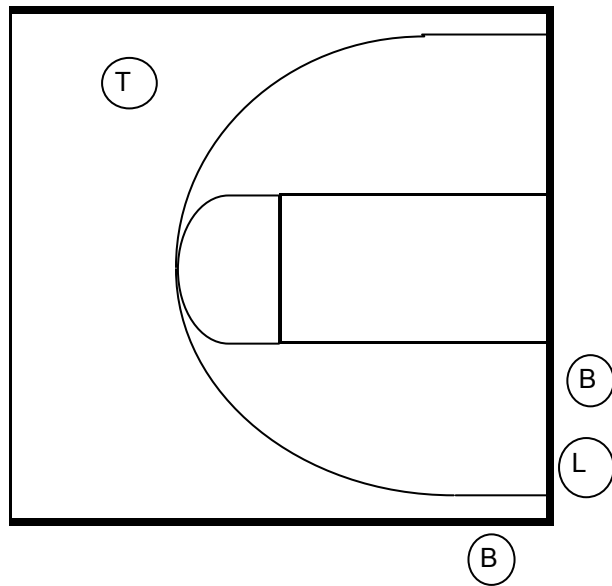
Both continue covering their respective sideline



Throw-In in front court by L:

Endline: hand the ball

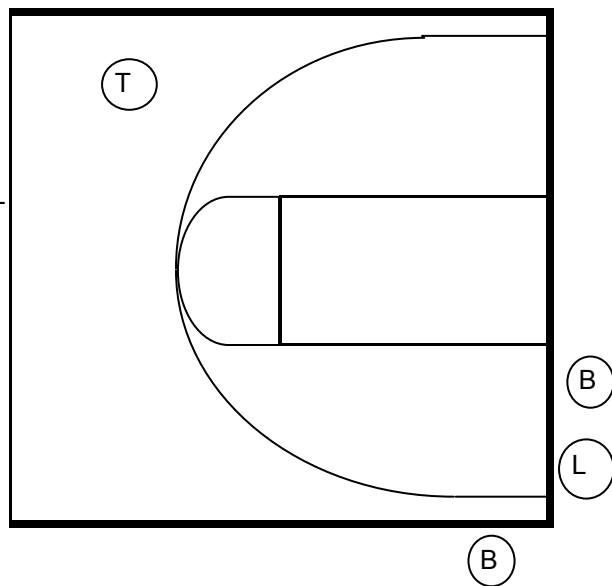
Sideline: bounce the ball



Throw-In in front court on L
sideline above free throw line
extended:

L: administer and becomes new T

T: becomes new L



5.0 Violation Calling Procedure

5.1 Calling Official

Give a sharp blast of whistle and fully extend one arm above the head with fingers extended to stop the clock
Move toward the area of the violation, stop and signal the nature of the violation
Do not turn your back when indicating directions
Point in the direction of the throw-in team's basket and call out their shirt color
Visually indicate the throw-in spot
Make eye contact with your partner prior to placing the ball at the disposal of the free thrower.
Designate the throw-in spot. Hand or bounce the ball.
Be sure both teams understand to whom the ball has been awarded
After you and your partner are in the correct position, place the ball at the thrower's disposal and start the throw-in count.

5.2 Free Official

Freeze and keep all players within field of vision until reporting of violation is completed
Ignore ball during reporting (players will deliver the ball)
After reporting is completed, secure ball and proceed to proper position for the free throw or throw-in

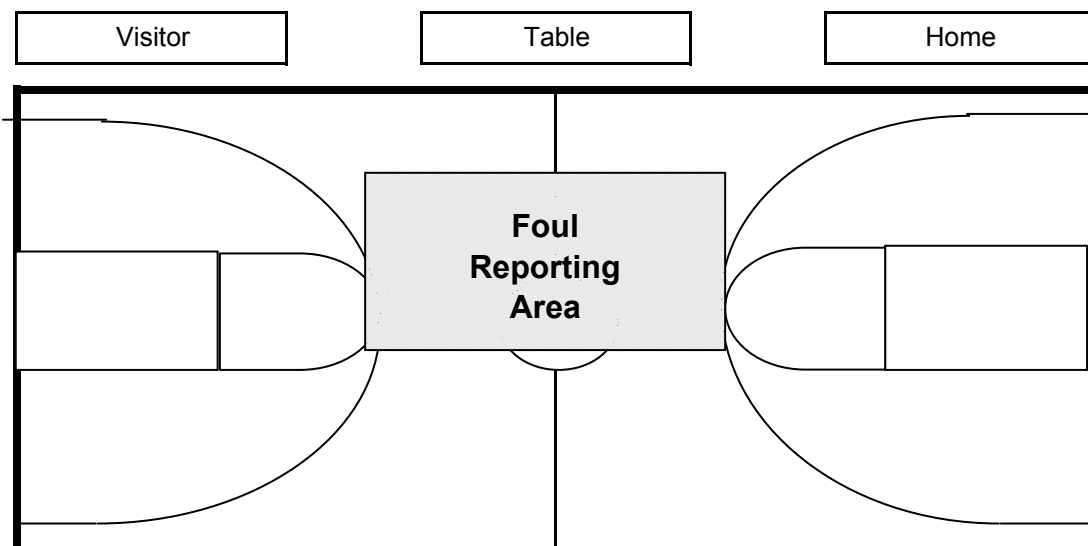
5.3 Practice Calling Violations w / Signals

5.4 Practice Calling Violations w / Rotations

6.0 Foul Calling Procedure

6.1 Calling Official

Informs the timer and alerts the scorer by sounding the whistle with a single sharp blast while raising one hand, fist clenched, straight and high above the head.
(Optional) - After a slight delay, extend the other hand, palm down toward the fouling player's hips
While holding the foul signal, stop and verbally inform the player that he/she fouled by stating the shirt color and number
Lower the foul signal and indicate the nature of the foul by giving a preliminary signal
Give free throw shooters number
Visually give number of free throws to partner or indicate throw in spot
If a goal has been scored, signal to count as soon as it is legally scored
Proceed quickly to reporting area (see diagram)
Go around the players not through them
Stop
Report color and number of fouler (one hand), nature of foul & number of free throw or spot
If 5th foul, notify coach, then timer to start clock and then player
Remain table side



6.2 Free Official

Freeze and keep all players within field of vision until reporting of foul is completed by partner
If the ball goes in the basket, it is the responsibility of the free official to communicate to the calling official "the ball went in."
Ignore ball during reporting (players will deliver the ball)
After reporting is completed, secure ball and proceed to proper position for free throw or throw-in
Move around the players not through them

6.3 Double Whistle

Eye Contact

Official responsible for the zone where foul occurred takes the call

Exception: If drive to basket, official in whose area drive originated take the call

Exception: If one official has a violation (open hand) and one official has a foul (closed hand) - officials should come together and confer about which happened first.

Recommendation in this situation is to call the violation vs. the foul is the violation occurred first.

6.4 Switching Positions

Always switch positions after each foul

Free official responsible to force switch

6.5 Practice Calling Fouls w / Signals

6.6 Practice Reporting Fouls and Rotations

7.0 Free Throw Administration Procedure

7.1 Free Throw Administration (Non-Technical Foul)

Lead and Trail eye contact

Visual display of number of free throws

Lane spaces properly occupied

Final look at table

7.2 Trail Free Throw Administration Responsibilities

Position: tableside behind free throw line extended halfway between sideline and lane line

Visible, discreet count

Free Thrower

All but the first lane space on opposite side

Step toward the end line after ball is released

Flight of the ball

Signal start of the clock if last free throw is unsuccessful and ball must remain alive

7.3 Lead Free Throw Administration Responsibilities

Step into lane and announce number of throws

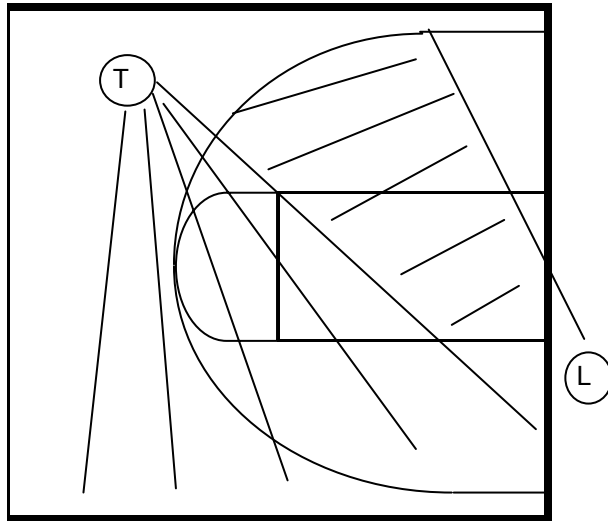
Bounce ball to free thrower

Position: Opposite table 6 feet outside lane line, well of court

Watch first lane space and all lane spaces opposite

Signal start of clock on throw-in after last successful free throw

Free Throw Administration



7.4 Free Throw Administration (Technical Foul)

Same procedure as normal free throw except no players line up

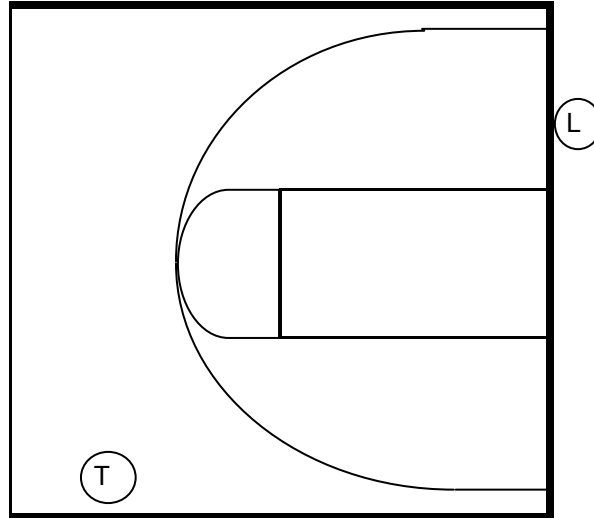
All players, with the exception of the shooter, will line up at half court

Trail will observe all players other than free thrower

After the last free throw, Lead retrieves the ball and bounces the ball to Trail at mid-court opposite table to administer the throw-in

If Intentional foul, play is resumed at the spot nearest where the foul occurred

Free Throw Administration



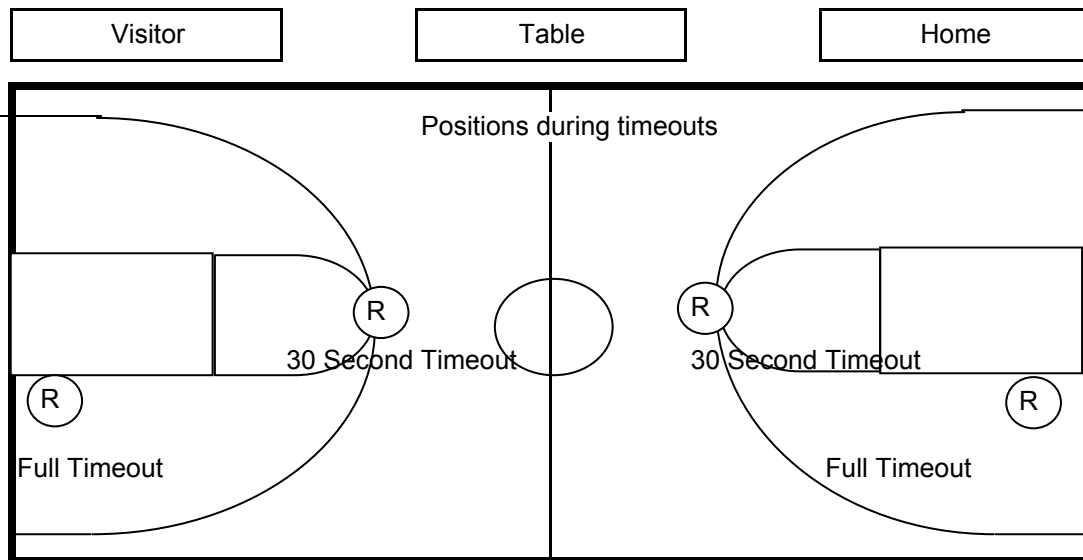
8.0 Position during Time Outs

Officials responsible to handle play resumption takes the spot nearer spot of resumption

Places ball on hip on the side of the basket where play will resume

At first horn, move toward huddle and announce first horn

Move to proper position to resume play



9.0 Alternating Possession

Administering official shall take a position with the ball at the division line opposite the table and indicate the direction of play with the placement of the ball and visually point the direction.

The non administering official shall take a position on the baseline, unless there is a press situation and then the position may be on the Free Throw Line extended.

On the throw-in following an intermissions, the administering official shall sound the whistle prior to handing or bouncing the ball to the thrower to indicate that play is about to begin.

